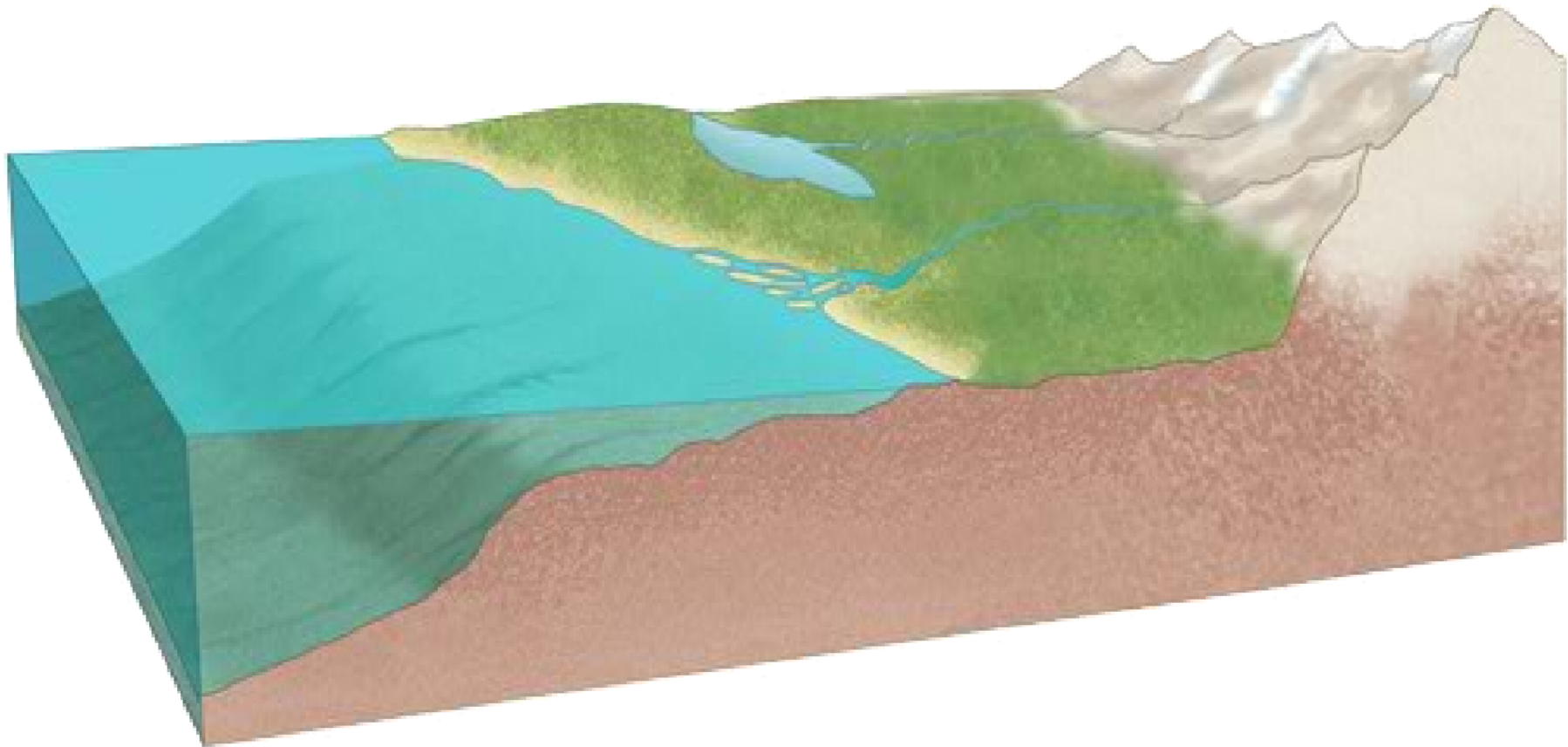


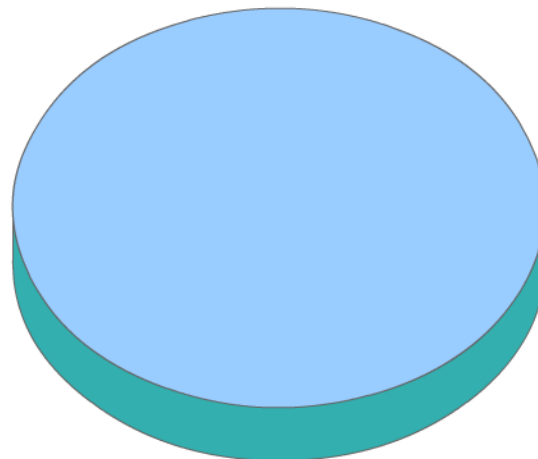
Evaporation



Earth's water: Ocean and freshwater distribution on Earth

Hydrologic Cycle

All water
100%

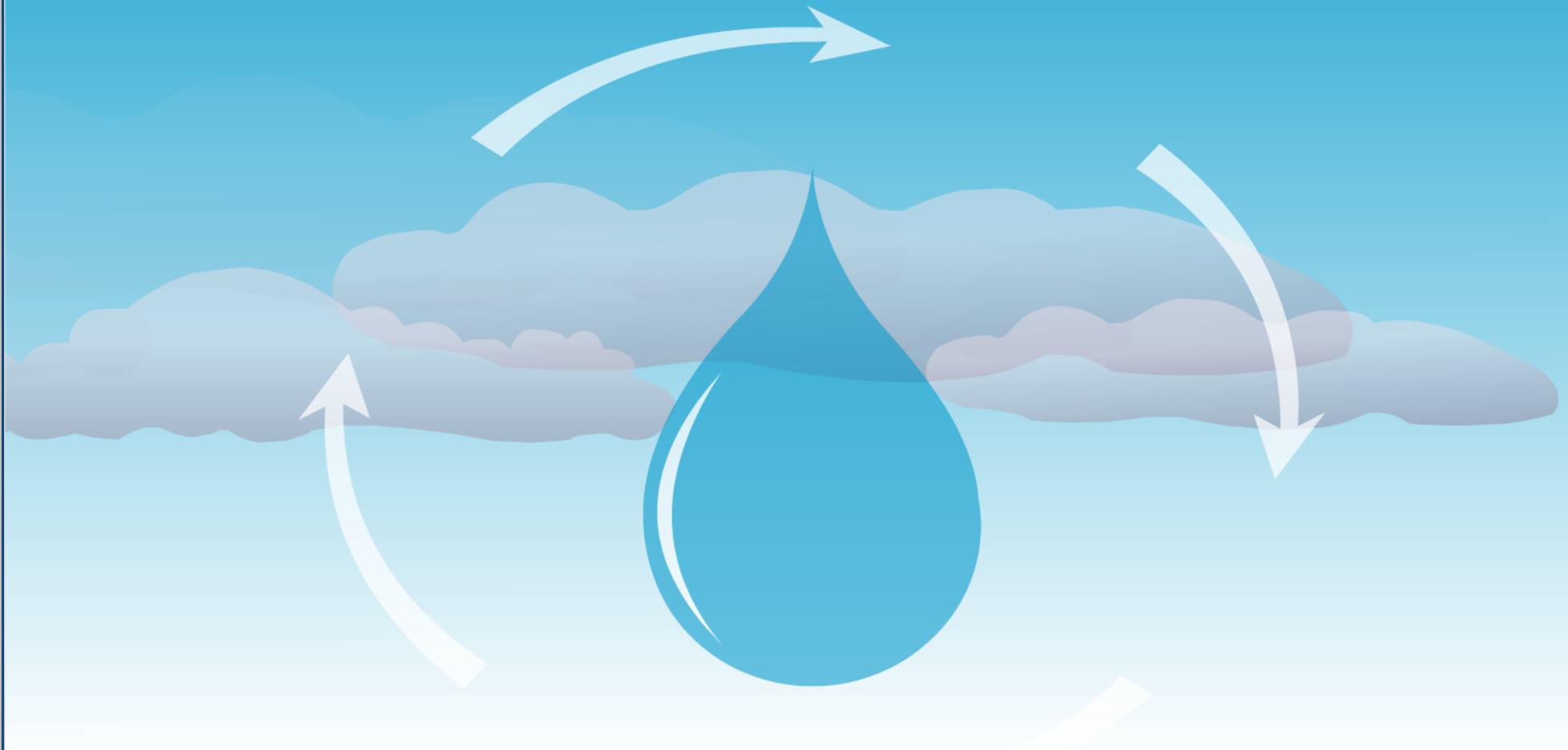


All water

Freshwater only

Surface Water

As a liquid, gas or solid, powered by the sun and gravity, water travels over, under and above the surface of the Earth in an incredible journey called, "The Water Cycle."

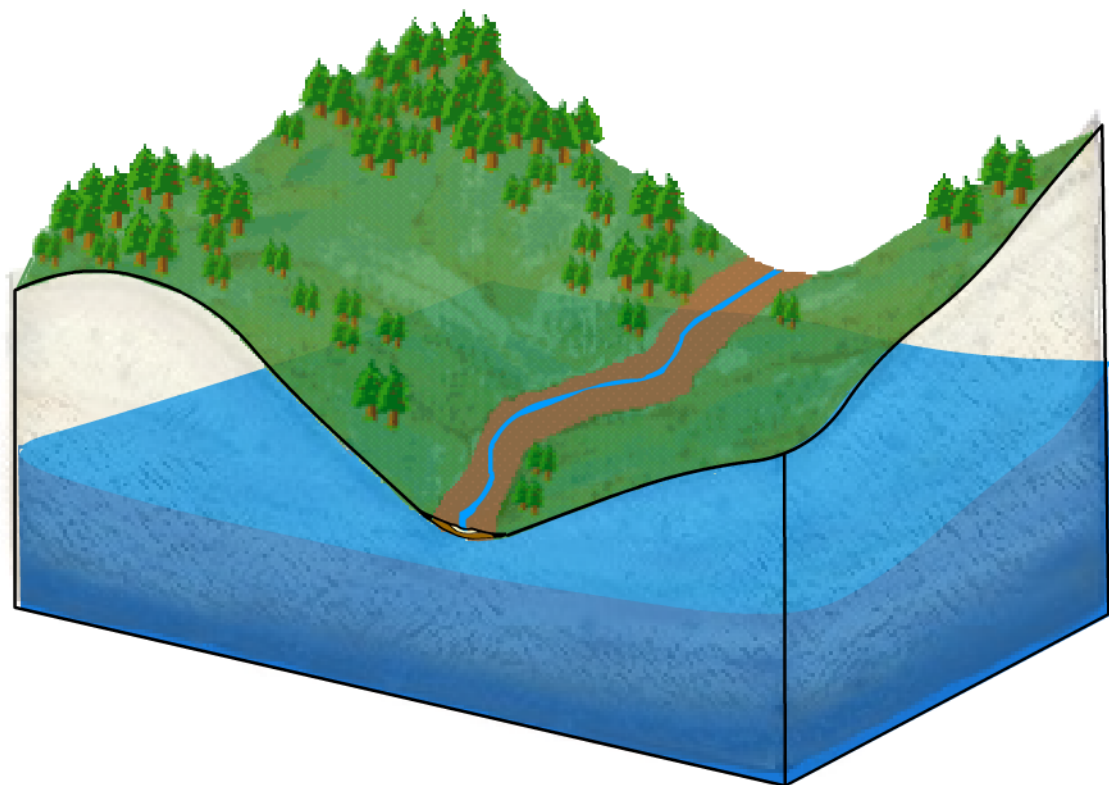


Home

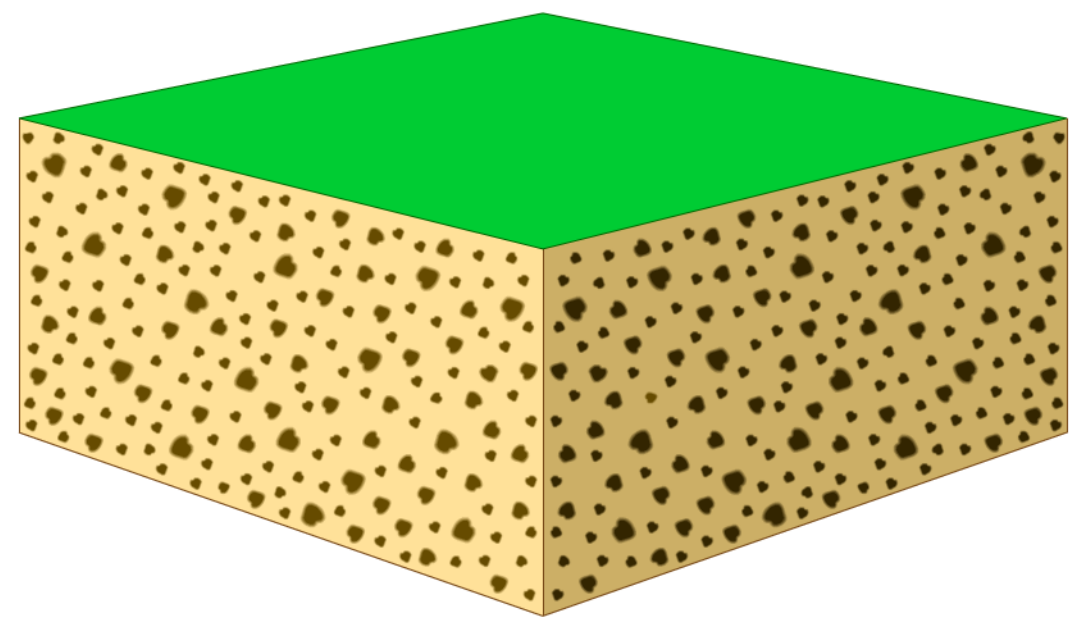


Model

Terms

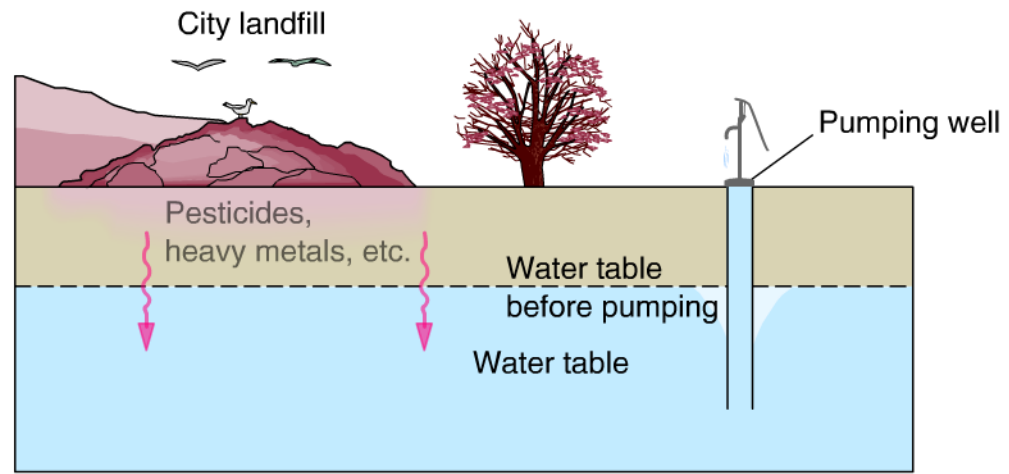


Formation of a water table

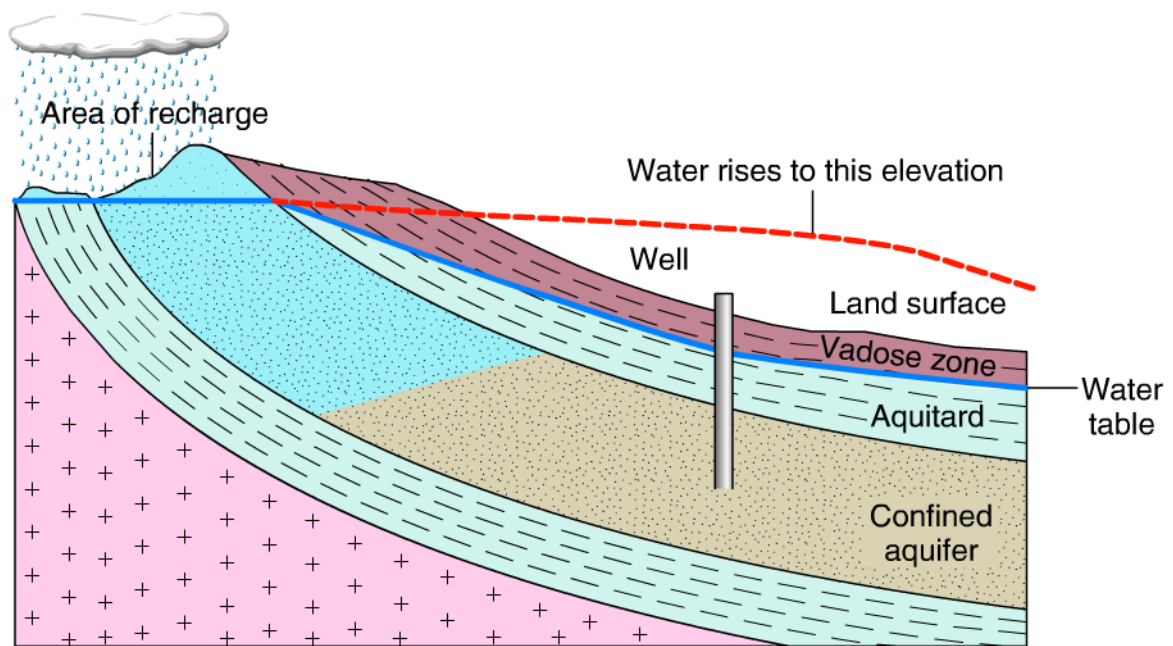


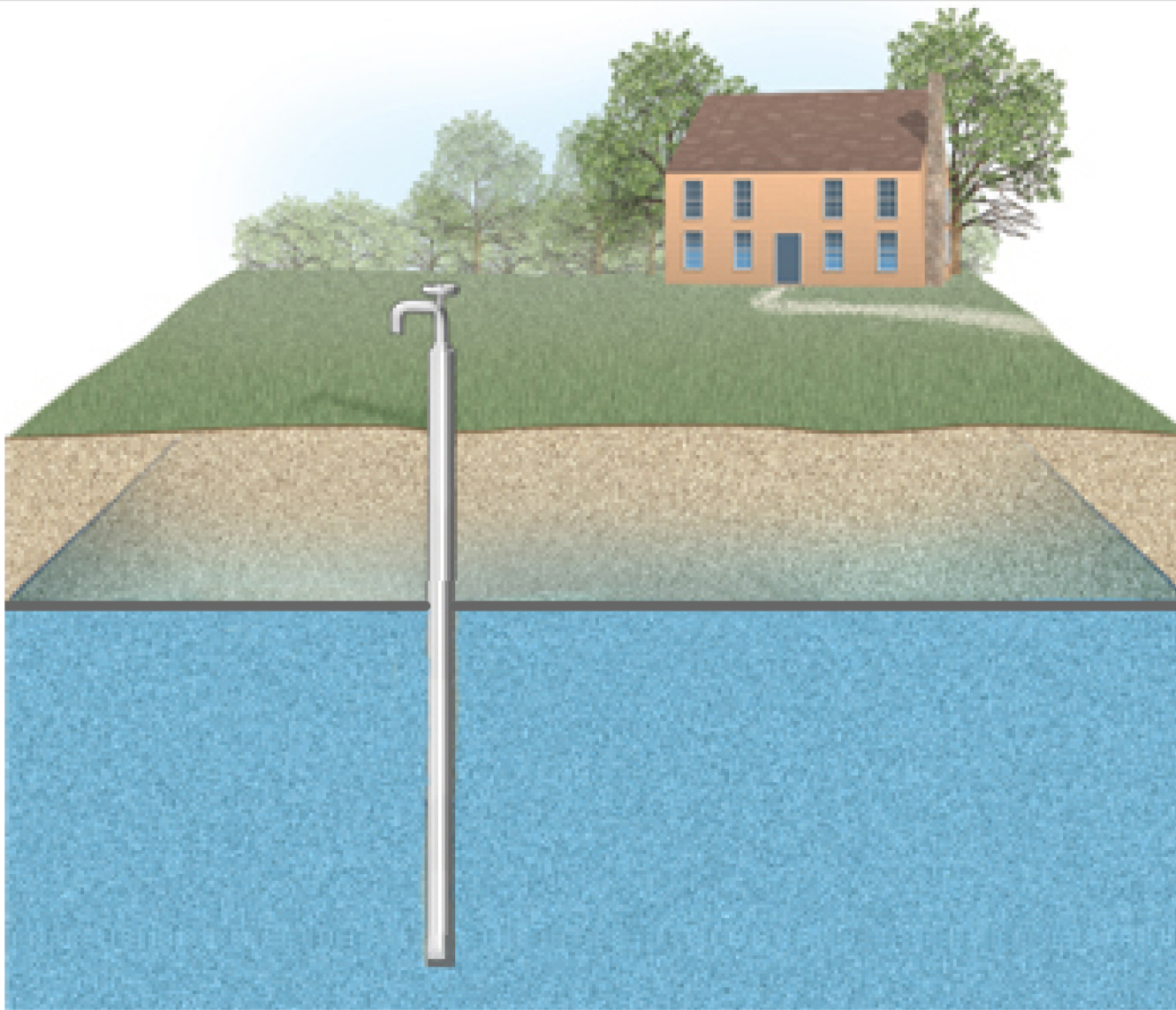
Groundwater Flow

Cone of Depression and Saltwater Intrusion



A



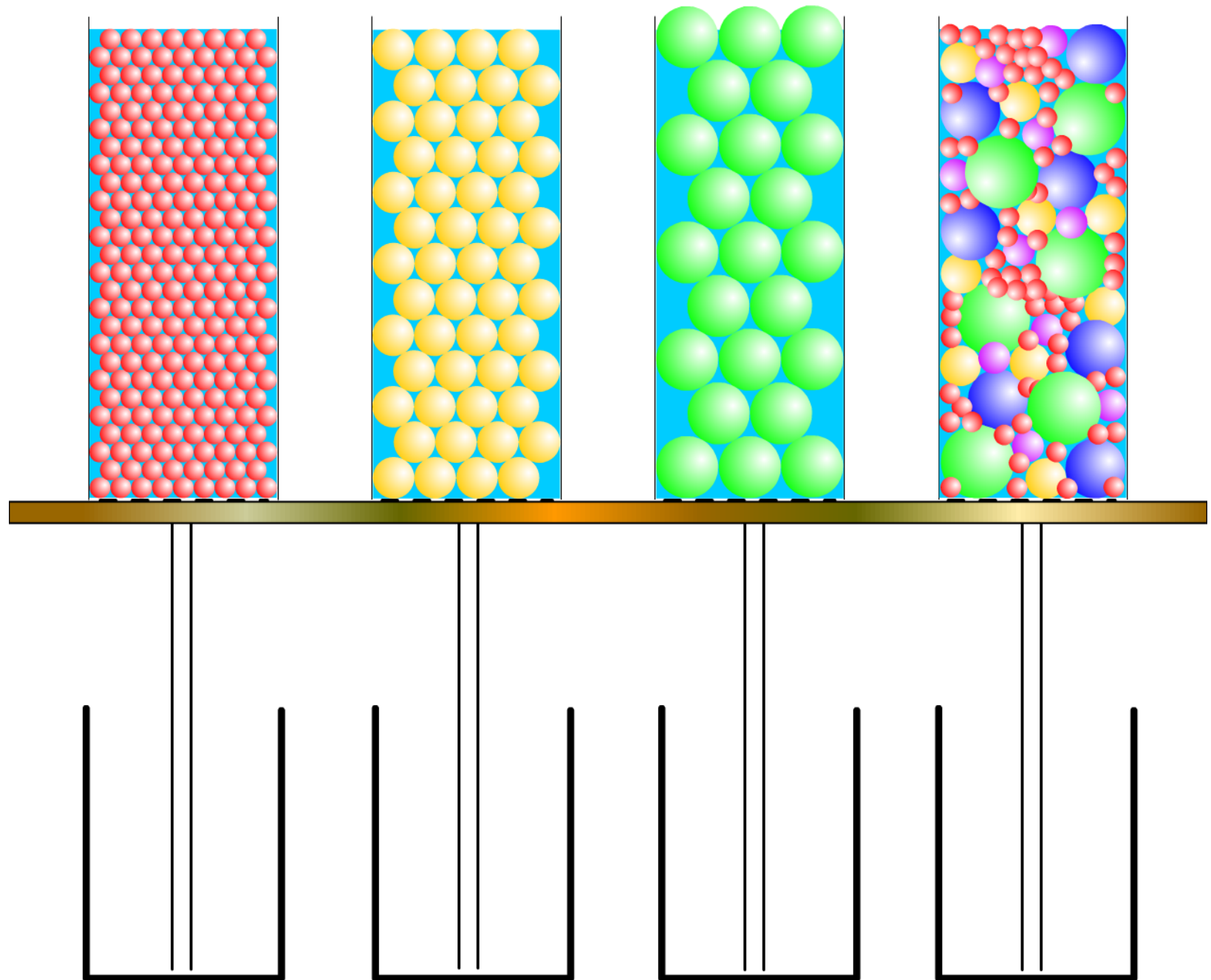


Step-through | Continuous Play

Select an option.

PERMEABILITY AND POROSITY

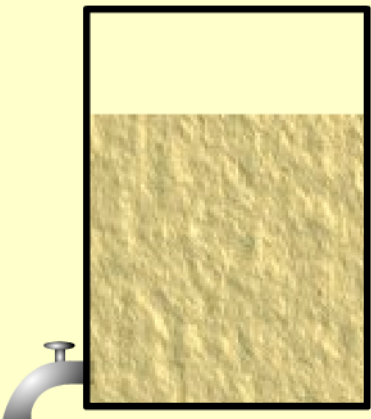
CLICK HERE TO RELEASE THE WATER!



Compare



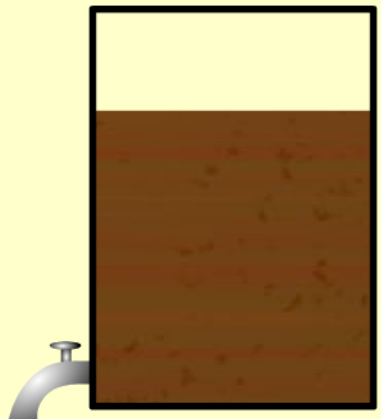
Gravel



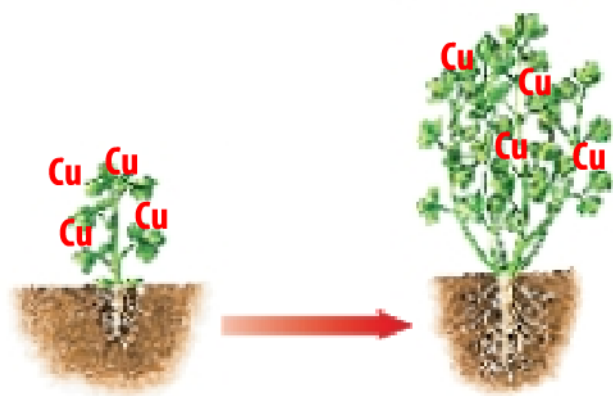
Sand



Silt



Clay



Metal absorbed

Composting



Burn

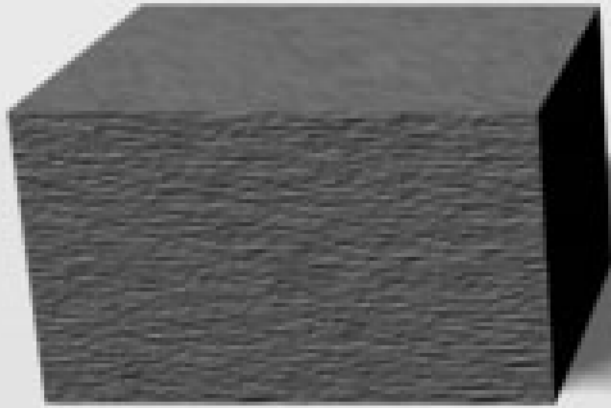


Metal recovery



Waste

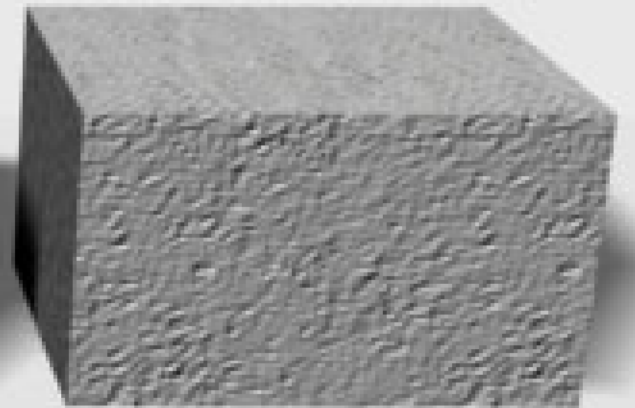




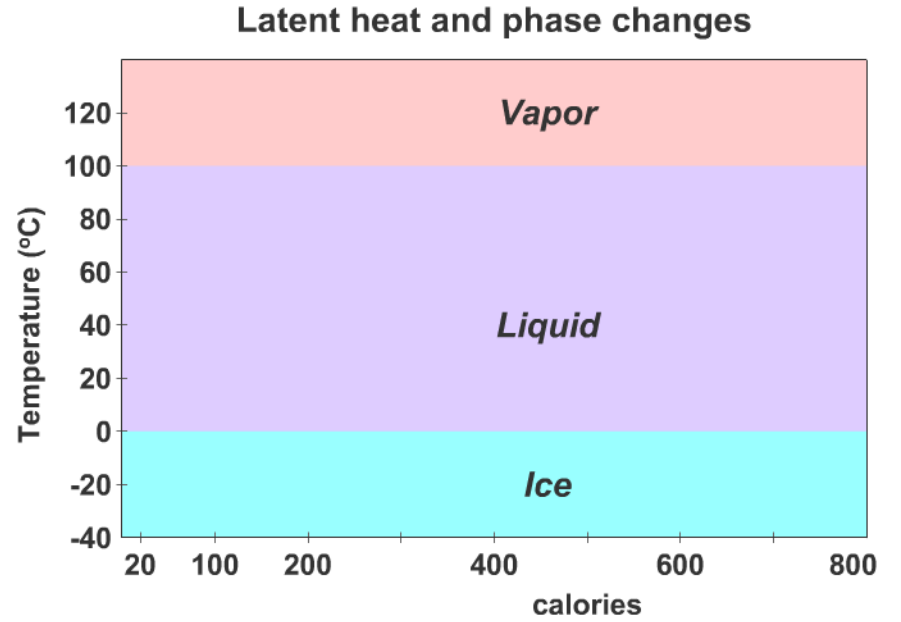
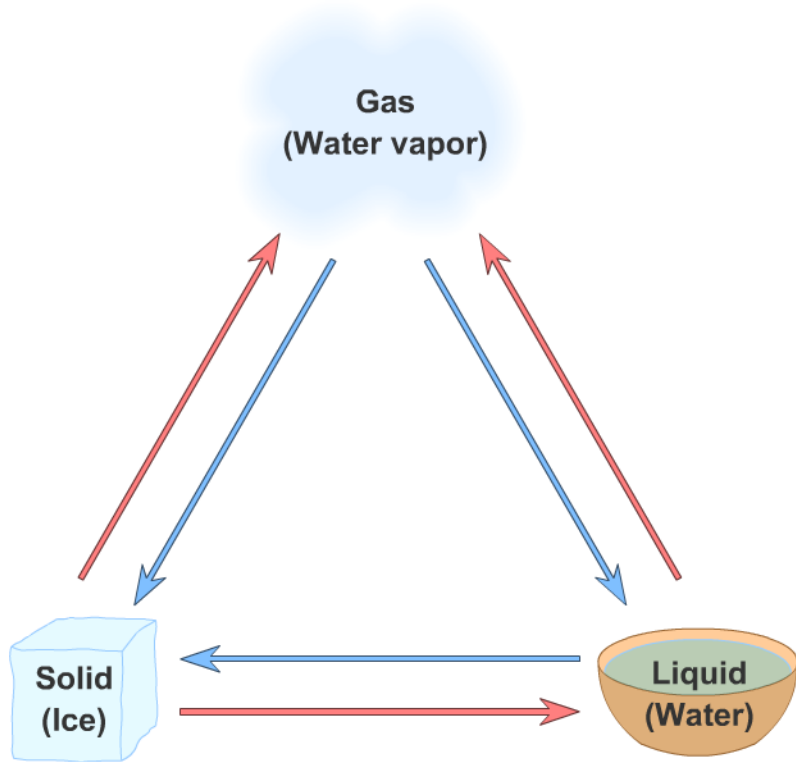
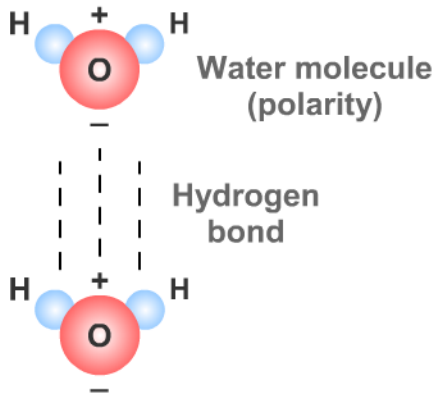
shale



sandstone



limestone



Solid (Ice) → Liquid (Water) → Gas (Water vapor) → Solid (Ice) → Gas (Water vapor) → Liquid (Water) → Solid (Ice)

